



# NORTH KELLYVILLE PUBLIC SCHOOL

D R E A M   ♦   B E L I E V E   ♦   S U C C E E D

## Hezlett Happenings ~ 27 November 2020

### PRINCIPAL'S NEWS



supportive of our orientation program which looked a little different to past years.

#### Staffing Update

Congratulations to Mr Steve Bondfield who was recently appointed to the role of Deputy Principal here at North Kellyville PS via merit selection. Mr Bondfield's experience is a valuable asset to our school. His enthusiasm and genuine care in supporting students, staff and the community is warmly welcomed. He officially takes up his position at the beginning of 2021.

#### 2021

Planning is well underway for 2021. We are looking forward to welcoming many new students and staff members. To assist with our planning we ask that parents/carers inform the school office in writing if any student is not returning to North Kellyville PS in 2021.

#### Hats, Sunscreen & Drink Bottles

The weather is definitely heating up and we ask that all students remember to bring their school hat and a drink bottle to school each day. On occasions we understand that students may forget these items. We are able to provide a cup for the student to drink from throughout the day if they forget their drink bottle and students will play in a shaded area if they do not have a hat. Sunscreen is available for all students to use from our sunscreen station that was recently installed near the front office.

#### Kindergarten Orientation

Our kindergarten orientation sessions have concluded for the year and as I mentioned in the previous newsletter, what an amazingly smooth process. Well done to all of our 2021 kindergarten students, your level of engagement and willingness to be involved in all the activities is very impressive. All the staff at North Kellyville PS eagerly await your official start to school in the new year. Thank you to the parents for being

#### Road Works

Thank you to the vast majority of parents and community members who have been patient and are following the correct road rules to ensure our students safety. It has been great to see a number of people opting to "park & walk".

Key points to remember:

- **No kiss and drop facility on Hezlett Road during construction.**
- **A temporary kiss and drop facility will be installed on Hipwell Avenue** however capacity will be much lower than the current kiss and drop. Parents are advised to think carefully about whether kiss and drop is the safest form of drop off and pick up. Parents who must drive are asked to consider parking and walking into and out of the school.
- Pedestrian access via Hezlett Road will be maintained.
- Hipwell Avenue has double lines, if you are caught doing a u-turn over double lines in a school zone it is a **\$457 fine and 4 demerit points.**
- Please do not drop students in the bus bay on Hezlett Road. It is a **\$344 fine and 2 demerit points.**
- Please ensure vehicles exit the kiss & drop and drive to the end of Hipwell Ave and use the turning circle.

#### Important Dates

16 December 2020	Last day for students
29 January 2021	Students return Years 1-6
1 February to 3 February	Best Start Assessments
3 February	Swimming Carnival Competitors Only
4 February	Kindergarten students begin



120-126 Hezlett Road, North Kellyville NSW 2155  
northkellyville-p.school@det.nsw.edu.au  
<https://northkellyville-p.schools.nsw.gov.au>  
8801 1911

#### \* NUT MINIMISATION \*

Please support our young students who live with life-threatening allergies to nuts by refraining from sending your child to school with nut-based food products like Nutella or Peanut Butter.

## School Travel – 2021 applications

Applications for student travel in 2021 opened on Monday 12 October 2020. Students who require a School Opal card or travel pass for 2021 can now [apply](#) online. A new application should be submitted if a student is applying for a school travel pass for the first time or requesting an additional pass as a result of a new shared parental responsibility situation (e.g. joint custody). Please go to the [school travel passes](#) at Transport NSW for more information.



## Get Tested!

Parents are reminded that any student or staff member with cold or flu-like symptoms must stay home, be tested, return a negative result and be symptom-free before returning to school. Many thanks to the parents who have heeded this advice and been providing screenshots of text message results to our office and for supporting the effort to maintain community safety.

[See latest COVID-19 health alerts here.](#)



**Luke Hogan**  
Relieving Principal

## DEPUTY'S DESK



## Dream Big Award Recipients

Our Dream Big awards celebrate student endeavour. Congratulations this week to Weeks 6 & 7 recipients:

CLASS	STUDENT
KC	Evelyn R
KC	Terry Y
KKC	Hunter N
KKC	Manvi M
KKC	Isla VdH
KKC	Sophie H
KKC	Kaira D
KKC	Imaan R
KO	Mika L
KO	Georgia P
KP	Airah K
KP	Angad S
KPV	Affan K-M
KPV	Avik P
KPV	DeVilliers V
KR	Jace B
KR	Gavin P
KR	Aila R
KR	Riya R
KV	Aidan S
KV	Justin H
KV	Kobi L
KV	Max S
2/1A	Alexis K
2/1A	Zachary C
2/1AK	Annabella T
2/1AK	Sulaksha G
2/1AK	Shaan B
2/1AK	Jill Y
2/1AK	Adam M
2/1AK	Archie H
2/1AK	Amirah Z
2/1AK	Sophie N
2/1B	Smithika T
2/1B	Siddharth A
2/1B	Aaron K
2/1B	Bernardo O
2/1D	Aakshara P
2/1D	Armaan B
2/1D	Hamza H
2/1H	Annabelle W
2/1H	Kiara D

### \* NUT MINIMISATION \*

Please support our young students who live with life-threatening allergies to nuts by refraining from sending your child to school with nut-based food products like Nutella or Peanut Butter.

2/1H	Yash P
2/1H	Cynthia L
2/1H	Shyla T
2/1H	Cynthia L
2/1I	Gurbani G
2/1I	Finn M-R
2/1I	Ibrahim B
2/1I	Saanvi S
2/1I	Veer P
2/1I	Ruby W
2/1I	Hannah N
2/1I	Laurelle P
2/1J	Zachary X
2/1J	Lavin H
2/1J	Hunter S
2/1J	Amber M
2/1J	Zachary X
2/1J	Evelyn J
2/1M	Alex U
2/1M	Nulara K
2/1M	Henry H
2/1M	Annie X
2/1M	Neeti P
2/1M	Grace C
2/1M	Maria G
2/1P	Indi C
2/1P	Leen M
2/1P	Parishey Y Z
2/1P	Mostafa H
2/1P	Chaitya K
K-6B	Emma B
4/3B	Lorin H
4/3B	Angad A
4/3B	Siena F
4/3C	Harnish P
4/3C	Lily O
4/3C	Zechary V
4/3C	Saanvi B
4/3J	Krutant M
4/3J	Joanna C
4/3J	Luna L
4/3J	Hamsini H
4/3S	Saatvik S
4/3S	Laurence X
4/3S	Jayden W
4/3S	Alexis L
4/3T	Bianca N
4/3T	Niyamat B
6/5A	Madison C
6/5A	Chelsea G
6/5A	Aaron S

6/5H	Ali S
6/5S	Alisha B

### SeeSaw Highlights

It's been another great fortnight witnessing quality student work on our SeeSaw application. Some samples are below...



Stage 1 investigated symmetry

We first cut a small part of the popsicle Stick. We put the small part and the Full Popsicle Stick Together and make a H Shape. Next we put another Popsicle stick on and out it slightly slanted. We cut a piece of a straw then stick it on the popsicle stick. Next to the exact same thing for the other side. We put the wooden stick inside the straw and cut the remaining bit. Next we attach the wooden stick onto the bottle cap and put it underneath the popsicle stick. Put a bottle cap on both sides. Then do the exact same for the other side. Next we put a solar panel on the top, then make a hole in the bottle cap to put a 3v dc motor on the cap. We cut the wire and attach a on/off switch on the side. Next we cut a small part of PS and put it right next to the panel then we put the cap on the side. Then we put the fan blade on the Cap!!!

Stage 3 experimented with electrical circuits.



120-126 Hezlett Road, North Kellyville NSW 2155

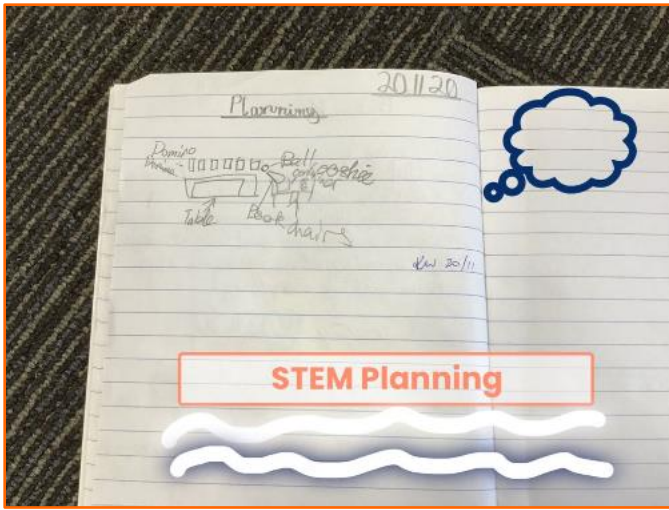
[northkellyville-p.school@det.nsw.edu.au](mailto:northkellyville-p.school@det.nsw.edu.au)

<https://northkellyville-p.schools.nsw.gov.au>

8801 1911

### \* NUT MINIMISATION \*

Please support our young students who live with life-threatening allergies to nuts by refraining from sending your child to school with nut-based food products like Nutella or Peanut Butter.



Stage 2's STEM planning.



Kindy had some help from Year 6 to investigate push and pull forces.

**Stephen Bondfield**  
Relieving Deputy Principal



In the Support Classes dominoes helped with numeracy.

## TEACHER TALK



### 2021 Kindergarten Orientation

Congratulations to all of our 2021 Kindergarten students and families on such a successful orientation program! It was wonderful to be able to meet our new families. Our staff were very impressed at the maturity and confidence of the students in each session group – what a positive start to their time at NKPS!

This week at orientation, families received a comprehensive information package containing a range of resources to support you in starting school. If you have not yet collected yours, please feel free to collect it from the school office at any time.

### Best Start Kindergarten Assessment

At the beginning of Kindergarten, all students engage in a mandatory one-on-one assessment that identifies their literacy and numeracy skills. Teachers use this assessment as a tool to effectively plan for teaching and learning that meets students' needs. Best Start assessments will take place on the 1<sup>st</sup>, 2<sup>nd</sup> and 3<sup>rd</sup> February 2021. Your child will be allocated a session time on one of those days. In the coming weeks, you will receive communication regarding the date and time of your session, and any other important information you need to know – please keep an eye out for an email in your inbox!



120-126 Hezlett Road, North Kellyville NSW 2155  
northkellyville-p.school@det.nsw.edu.au  
<https://northkellyville-p.schools.nsw.gov.au>  
8801 1911

### \* NUT MINIMISATION \*

Please support our young students who live with life-threatening allergies to nuts by refraining from sending your child to school with nut-based food products like Nutella or Peanut Butter.

## First Day of Kindergarten 2021

The first day of school for Kindergarten students will occur after Best Start assessments are completed. The first day of school will be Thursday 4 February 2021.

**Mrs Courtney Johnston**  
Assistant Principal

## Appreciation to staff at the Hills Clinic

Students from K-6 took part in engaging lessons that raised awareness about mental health issues and how they are relevant to society today. It is evident that our children today are experiencing increased changes and high expectations. It is only natural that anxiety and characteristics of worry are gradually becoming more apparent. North Kellyville prides itself on having a core value of being resilient.

As a school, we acknowledge the emotional, social and mental wellbeing of staff, students and the wider community. Students are given strategies on how to respond in a mature and respectful manner to various situations.

As part of the 'RUOK?' Day initiative, we recognised the efforts of the incredibly compassionate and dedicated staff members at the Hills Clinic. They provide a great deal of support to both young teenagers and adults with mental illness disorders. As a symbol of our appreciation, students at North Kellyville collaborated on creating multiple artworks that had a meaningful and inspiring message. These were framed and are now displayed at the clinic. Staff were deeply grateful and acknowledged the North Kellyville Public School community for their efforts.

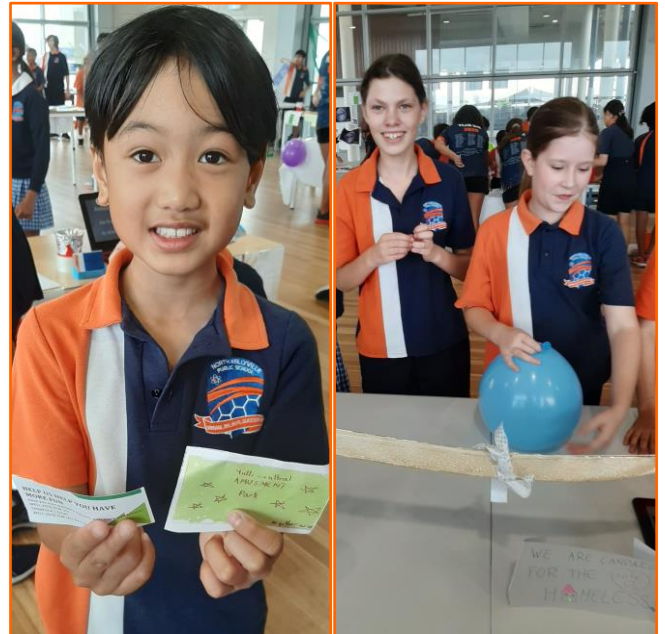


## 'R U OK' Day Committee

### What's Hot in Support

As the temperatures rise across Sydney, the end of term has our classes heating up: exploring the sunshine, getting our heart rates up in sport, and brimming with excitement for the summer holidays! As always, we've been enjoying collaborative learning and teaching: combining for increasingly holiday-

themed cooking, fun and fabulous art, and of course sport and physical activity. This week, we took the opportunity to visit our classmates who've been participating in the Stage 3 'Campaign' competition: browsing the stands, hearing the convincing spiels and finally, voting with our feet and our tokens for the event we'd most like to see occur at NKPS! It was a fabulous event, filled with excited and very persuasive campaigners! We're excited to enjoy these last weeks of 2020 together, and start the exciting process of looking towards our plans for 2021!



**Laena Ailbon-Crockett**  
Relieving AP Support Classes

### \* NUT MINIMISATION \*

Please support our young students who live with life-threatening allergies to nuts by refraining from sending your child to school with nut-based food products like Nutella or Peanut Butter.

## SRC Update

Week 8 will bring our very last SRC meetings for 2020. We've had a huge year, and battled through significant challenges to the composition and maintenance of our SRC group. All of our representatives should feel very proud of their contribution and commitment to the initiatives and unity of the SRC, particularly in light of the changes to our meetings. Despite the hurdles, we've achieved a great deal this year, thanks to our community-minded students and their enthusiasm for giving. Our poster competition promoted our token system reflecting our four core values and their significance to the NK Way. Our students were instrumental in brainstorming the many school-wide reward events that each token winner could select between. SRC representatives were able to present at assemblies, a tradition upheld by our capable school leaders when COVID necessitated a switch to virtual assemblies.

This term, we decided to focus on helping out a local community group, the Norwest Region Salvation Army, in their food hamper collection drive.

Salvo's representatives will be collecting the many boxes of food our school community has donated on Thursday 3 December. That means we have another week to keep the donations flowing. I hope they have a big van! Lastly, next week will bring us the results of this term's winning school-wide event, as voted by our students. It's a tight race between a beach theme multi-day and crazy hair day. Make your voice heard and get voting for the last week of Term 4, by demonstrating the important values that guide our school community: be respectful, be responsible, be resilient and of course, DREAM BIG!



**Miss Laena Allbon-Crockett and Kieran Janes**  
SRC Coordinators



120-126 Hezlett Road, North Kellyville NSW 2155

[northkellyville-p.school@det.nsw.edu.au](mailto:northkellyville-p.school@det.nsw.edu.au)

<https://northkellyville-p.schools.nsw.gov.au>

8801 1911

### \* NUT MINIMISATION \*

Please support our young students who live with life-threatening allergies to nuts by refraining from sending your child to school with nut-based food products like Nutella or Peanut Butter.



## Book Borrowing

Borrowing books this year has now finished, in order for stocktake to commence. Please be aware that overdue notices will be sent home from Week 9. There is no 'overdue fee' payable however if a book is lost or damaged, the replacement cost of the book is expected to be paid. We really just need the book back!

## Parent Survey

Parents are invited to complete the following non-identifying [survey](#) regarding library services in order to inform our planning for 2021. We value your input and appreciate you taking the time to share your voice.

The survey can also be accessed via the QR code-

Until next time...happy reading!



**Ms Katie Whelan**  
Teacher Librarian



	<p><b>Out Of School Hours Care</b> – Wesley Mission has been appointed as the provider of out of school hours care. The centre will run out of the school hall both before and after school. Morning care will commence from 6:30am, while care in the afternoon will be provided until 6:30pm. Contact OOSH on 96266620 or email <a href="mailto:oosh@wesleymission.org.au">oosh@wesleymission.org.au</a></p>
	<p><b>Facebook Page</b> – 'Like' our Facebook page and encourage all of your friends, families and neighbours to do likewise!</p>
	<p><b>Mailing List</b> – To be added to the Hezlett Happenings mailing list, <a href="#">click here</a>.</p>
	<p><b>Parent Handbook</b> – <u>Edition 2 of the North Kellyville Public School Parent Handbook if available here</u>. Please read this document to become acquainted with many school programs and procedures.</p>
	<p><b>School Stream App</b> – A lot of news, forms and notices are pushed out to mobile devices through our School Stream App. If you haven't yet downloaded the app, do so now!</p>
	<p><b>Parent Volunteers</b> – must supply <u>100 points of ID</u> to be brought to the office where it will be photocopied and kept on file for audit purposes and <u>Appendix 5</u> which is a summary of the 100 points and a signed declaration about character and previous offences.</p>
	<p><b>Follow our staff on Twitter:</b></p> <ul style="list-style-type: none"> <li>@moth_t</li> <li>@KaseyLeaMcGill</li> <li>@NewthSamantha</li> <li>@SoniaKadian1</li> <li>@Miss_M_Cannon</li> <li>@Caitlin65032239</li> <li>@NKPSLibrary</li> <li>@Lauren33421276</li> <li>@muqadasa_ghaf</li> <li>@cheahmilly</li> </ul>
	<p><b>Dollarmites School Banking</b> – The P&amp;C led school banking initiative is currently on hold.</p>



120-126 Hezlett Road, North Kellyville NSW 2155

[northkellyville-p.school@det.nsw.edu.au](mailto:northkellyville-p.school@det.nsw.edu.au)

<https://northkellyville-p.schools.nsw.gov.au>

8801 1911

### \* NUT MINIMISATION \*

Please support our young students who live with life-threatening allergies to nuts by refraining from sending your child to school with nut-based food products like Nutella or Peanut Butter.



**Hamper  
of HOPE**  
THE SALVATION ARMY

**Accepted Donations**

Candy Canes	Tinned Ham	Pasta and Rice
Packets of Lollies/Chips/ Nuts	Tinned Potatoes	Pasta Sauce jars
Bon Bons	Tinned Peas, Corn and Carrots	Tinned Tuna/Salmon
Rice Crackers or Biscuits	Gravy mix powder or liquid	Tea/ Coffee
Shortbread Biscuits	Christmas Cake	Long Life Milk
Bottles of Soft Drink	Christmas Pudding	Baked Beans
Cordial	Long Life Custard	Cereal
	Tinned Fruit Salad	Cake Mix

**Please take all donations to the Office and place in the baskets provided. All donations will be collected by the Salvation Army after the 27th November 2020.**



120-126 Hezlett Road, North Kellyville NSW 2155

[northkellyville-p.school@det.nsw.edu.au](mailto:northkellyville-p.school@det.nsw.edu.au)

<https://northkellyville-p.schools.nsw.gov.au>

8801 1911

**\* NUT MINIMISATION \***

Please support our young students who live with life-threatening allergies to nuts by refraining from sending your child to school with nut-based food products like Nutella or Peanut Butter.





We are speeding towards the end of the year with 3 weeks left of school and Christmas only a month away – Term 4 has really flown by quickly for all of us!

### P&C Meeting



Our next P&C Meeting will be held on Wednesday 2 December 2020, starting at 7.30pm. This will be our last meeting for the year and will once again be held via Zoom. To join the meeting, please [click on this link](#) (passcode is 134314).

We really hope to see you at the meeting to celebrate all our successes and achievements throughout a challenging 2020. (Hint: we have some big news to share, so join us to be the first to hear the news!)

You are invited to become a financial member of our P&C. Membership is \$2 and you get to become more involved with our activities and initiatives. To become a member, please email us before the meeting date at [nkps.pca@gmail.com](mailto:nkps.pca@gmail.com) so we can provide you with some further information.

### Christmas Raffle Bonanza

Tickets to enter our inaugural Christmas Raffle Bonanza are selling fast! All tickets will be in the running for these amazing prizes.

- 1<sup>st</sup> Prize : Christmas Hamper + \$1,000 Cash Prize
- 2<sup>nd</sup> Prize : Christmas Hamper + \$200 Cash Prize
- 3<sup>rd</sup> Prize : Christmas Hamper + \$100 Cash Prize

Buy your tickets at <https://www.raffletix.com.au/nkpsxmasraffle2020> or use the QR Code!

1 ticket = \$10 | 2 tickets = \$20 | 3 tickets = \$25 | 6 tickets = \$50



Limited tickets are available. Get in quick before the 300 tickets are all sold out! Prizes will be drawn on Thursday 10 December 2020 at 10am by Mr Hogan.

### Abbeyvale Cookies



There is still time to place your Christmas Cookies order with [Abbeyvale Cookies!](#) A small business based in North Kellyville, Abbey is teaming up with the P&C to bring you a most delectable Christmas gift option – COOKIES! The order form is at the end of the newsletter – please use this form to order your treats for delivery by 10 December 2020. For more information, [please contact Abbeyvale Cookies directly.](#)

### Big Life Journal

The NKPS P&C is very excited to partner with Big Life Journal, a science-based journal that helps children grow to be resilient, confident, and emotionally healthy.



With the effects of the quarantine and social distancing continuing to disrupt normal life, we need to support our children and students' mindsets more than ever. We want to support our children to develop a love of learning, curiosity about the world, tenacity to think big, and persistence to do amazing things. When the current estimate is that 65% of the jobs our children will hold have not yet been invented, we need to make sure they have the growth mindset necessary to innovate, learn, and succeed.



120-126 Hezlett Road, North Kellyville NSW 2155

[northkellyville-p.school@det.nsw.edu.au](mailto:northkellyville-p.school@det.nsw.edu.au)

<https://northkellyville-p.schools.nsw.gov.au>

8801 1911

#### \* NUT MINIMISATION \*

Please support our young students who live with life-threatening allergies to nuts by refraining from sending your child to school with nut-based food products like Nutella or Peanut Butter.

All proceeds from the sale of these amazing books goes to the NKPS P&C and in turn to our wonderful children in the form of much needed resources for our school.

The Order Form and more information appears at the end of this issue of Hezlett Happenings. Please place your orders by Friday 4 December 2020. For further information, please email us at [nkps.pca@gmail.com](mailto:nkps.pca@gmail.com).

### NKPS Second Hand Uniform Shop

The NKPS Second Hand Uniform Shop is LIVE! Click on [this link](#) to the online Facebook page and browse our catalogue of items. Our online shop and the Facebook page are run by NKPS P&C volunteers, so please be kind to our wonderful team and be mindful of [the rules](#). Each item listed for sale notes the price, size and condition and is accompanied by photographs of the item. A full price list is [listed here](#). Please contact [nkpssecondhanduniformshop@gmail.com](mailto:nkpssecondhanduniformshop@gmail.com) if you have any questions or require assistance.

A big vote of thanks to Katie H, Courtney A, Alycia S, Shelley B and Tracy R for launching our NKPS Second Hand Uniform Shop!



### Stuck On You



Did you know that NKPS P&C is partnered with [Stuck On You](#)?

Stuck On You has the coolest kids name labels and gifts and more. Choose from many designs (including Bluey and Hey Duggee) and add your name to create personalised labels or gifts. The labels are absolutely gorgeous and very durable – they stay stuck in the dishwasher, microwave or washing machine. If your kids are anything like mine, labelling everything is a must!

Every purchase [via this link](#) will raise funds for the NKPS P&C.

### Entertainment Memberships

We have the perfect Christmas gift idea for you – the [Entertainment Membership](#)! Discover your own backyard and support your local businesses, especially after the year we've had.

There are 3 memberships to choose from: Single City, Multi City and Multi Plus. Memberships start any time and last from the time you activate for the set period (12 months or 24 months).

Support your local community and receive fantastic savings while you eat, play and shop during the holidays with Entertainment. Purchase a membership today and you will also be helping to support the NKPS P&C.

Right now, we'll raise an EXTRA \$10 or \$20 on top of the 20% we receive from every Entertainment Membership purchased [via this link](#)!

Stay safe and happy and reach out to us, whether you have an idea to share, or just to have a chat.



**Gloria Hill**  
NKPS P&C President



120-126 Hezlett Road, North Kellyville NSW 2155

[northkellyville-p.school@det.nsw.edu.au](mailto:northkellyville-p.school@det.nsw.edu.au)

<https://northkellyville-p.schools.nsw.gov.au>

8801 1911

### \* NUT MINIMISATION \*

Please support our young students who live with life-threatening allergies to nuts by refraining from sending your child to school with nut-based food products like Nutella or Peanut Butter.



With the effects of the quarantine and social distancing continuing to disrupt normal life, we need to support our children and students' mindsets more than ever.

We want to support our children to develop a love of learning, curiosity about the world, tenacity to think big, and persistence to do amazing things.

When the current estimate is that 65% of the jobs our children will hold have not yet been invented, we need to make sure they have the **growth mindset** necessary to innovate, learn, and succeed.

### Why is the growth mindset so critical for our children?

When children have a growth mindset, they believe they can learn anything with time and practice. They take on new challenges without the fear of failure and persist when the going gets tough.

More importantly, a growth mindset allows children to adapt to changes and learn new skills which is a critical skill necessary to succeed in the constantly changing technology-driven world.

A recent nationwide study shows instilling a growth mindset in children can make lasting impact on their overall academic success.

### Why Big Life Journal Resources?

Let's give our children the best possible tools to help them develop a resilient growth mind set and all the necessary skills they need to grow into successful, fulfilled adults. Many experts agree that intangible skills, capabilities, and attributes such as emotional intelligence, curiosity, creativity, adaptability, resilience, and critical thinking will be highly valued.

Big Life Journal develops engaging, science-based resources to help children develop a growth mindset and all these necessary skills and capabilities.

#### 1. Big Life Journal - Daily Edition

A science-based journal that helps children grow to be resilient, confident, and emotionally healthy.

The daily activities inside the Big Life Journal - Daily Edition help your child focus on encouraging,

self-loving thoughts and wire their brain for growth mindset, resilience, confidence, gratitude, kindness, and self-love.

Endorsed by the world-known experts Dr. Shefali Tsabary and Dr. Tina Bryson (the co-author of "The Whole-Brain Child"), this journal features activities based on the latest research on growth mindset, brain plasticity, positive psychology, and child development.

#### 2. Big Life Journal – 1st Edition

This **growth mindset journal** empowers children to face challenges with confidence, embrace mistakes, and know they can learn anything!

Featuring a new and interesting topic every week, the Big Life Journal helps children develop strong **Social-Emotional Learning (SEL)** and **growth mindset** skills through inspiring stories, colourful illustrations, and engaging writing prompts.

#### 3. Big Life Journal - 2nd Edition

Helps children develop strong Social-Emotional Learning (SEL) and growth mindset skills through inspiring stories, colourful illustrations, and engaging guided activities.

In this illustrated journal, children discover:

- How to believe in themselves
- How to face challenges with confidence
- Mistakes are opportunities to grow
- They can achieve anything when they're persistent

### How is the Big Life Journal 1st Edition different from the 2nd edition?

The two editions are very different and there's no content overlap. The stories, quotes, illustrations, and writing prompts are all different. Your child can work on the journals in any order.

### Ordering

All orders will be placed using an order form. Cash payments or direct deposits will be accepted. Orders must be placed by 4 December 2020. For further information, please email us at [nkps.pca@gmail.com](mailto:nkps.pca@gmail.com).



120-126 Hezlett Road, North Kellyville NSW 2155

[northkellyville-p.school@det.nsw.edu.au](mailto:northkellyville-p.school@det.nsw.edu.au)

<https://northkellyville-p.schools.nsw.gov.au>

8801 1911

### \* NUT MINIMISATION \*

Please support our young students who live with life-threatening allergies to nuts by refraining from sending your child to school with nut-based food products like Nutella or Peanut Butter.



With the effects of the quarantine and social distancing continuing to disrupt normal life, we need to support our children and students' mindsets more than ever. We want to support our children to develop a love of learning, curiosity about the world, tenacity to think big, and persistence to do amazing things. When the current estimate is that 65% of the jobs our children will hold have not yet been invented, we need to make sure they have the **growth mindset** necessary to innovate, learn, and succeed.

The P&C is very excited to have partnered with Big Life Journal and all proceeds from the sale of these amazing books goes to the NKPS P&C Association and in turn to our wonderful children in the form of much needed resources for our school.

**PAYMENTS:**

Please return all order forms by email to [nkps.pca@gmail.com](mailto:nkps.pca@gmail.com) with one of the following payments:

- **PAYPAL** ([paypal.me/nkps722](https://www.paypal.me/nkps722))
- **BANK TRANSFER** NKPS P and C Association  
BSB: 062703 ACC: 10591782

**ORDER FORM**

Name: \_\_\_\_\_

Contact Number: \_\_\_\_\_

Email Address: \_\_\_\_\_

Child's Name: \_\_\_\_\_

Child's Class: \_\_\_\_\_

Please return orders with proof of payment on or before **4 December 2020**

**ORDERS ARE ONLY CONFIRMED WITH PAYMENT**

DESCRIPTION	PRICE EACH	ORDER	AMOUNT
<b>Big Life Journal - Daily Edition</b> The daily activities inside the Big Life Journal - Daily Edition help your child focus on encouraging, self-loving thoughts and wire their brain for growth	\$28.90		
<b>Big Life Journal – 1st Edition</b> Featuring a new and interesting topic every week, the Big Life Journal helps children develop strong <b>Social-Emotional Learning (SEL)</b> and <b>growth mindset</b> skills through inspiring stories, colourful illustrations, and engaging writing prompts.	\$35.90		
<b>Big Life Journal - 2nd Edition</b> Helps children develop strong Social-Emotional Learning (SEL) and growth mindset skills through inspiring stories, colourful illustrations, and engaging guided activities.	\$35.90		
		TOTAL	



120-126 Hezlett Road, North Kellyville NSW 2155  
[northkellyville-p.school@det.nsw.edu.au](mailto:northkellyville-p.school@det.nsw.edu.au)  
<https://northkellyville-p.schools.nsw.gov.au>  
 8801 1911

**\* NUT MINIMISATION \***

Please support our young students who live with life-threatening allergies to nuts by refraining from sending your child to school with nut-based food products like Nutella or Peanut Butter.

# Christmas Cookies



\$15  
EACH

\$1.50 per cookie box will be donated to NKPS P&C

**DELIVERY DATE:  
10TH DECEMBER**

**\$20 PER BOX**

Gift box can be included for \$1.5



**\$3 EACH**



**\$15 PER  
BOX**



**\$25 PER BOX**

Gift box can be included for \$2



abbeyvale.cookies



<https://abbeyvalecookies.square.site/>

**CONTAINS: Gluten, dairy, eggs and may contain traces of nuts**



120-126 Hezlett Road, North Kellyville NSW 2155

northkellyville-p.school@det.nsw.edu.au

<https://northkellyville-p.schools.nsw.gov.au>

8801 1911

**\* NUT MINIMISATION \***

Please support our young students who live with life-threatening allergies to nuts by refraining from sending your child to school with nut-based food products like Nutella or Peanut Butter.

# Order Form



abbeyvale.cookies    
0403 954 717 

## CUSTOMER DETAILS

FREE delivery to the school for collection OR \$1 fee per house for delivery

Parent's name: \_\_\_\_\_

E-mail or Phone: \_\_\_\_\_

Child's name/class: \_\_\_\_\_

Delivery Address: \_\_\_\_\_

## ORDER DETAILS

Teacher Set - place customisation names on back table

Item	Quantity

## PAYMENT DETAILS

Processing fee of 2% will be charge on all credit/debit card entries

CARD OR  CASH

Name on card: \_\_\_\_\_ Date: \_\_\_\_\_

Card Number: \_\_\_\_\_ Final amount: \$ \_\_\_\_\_

Expiry date: \_\_\_\_\_ Signature: \_\_\_\_\_



120-126 Hezlett Road, North Kellyville NSW 2155

northkellyville-p.school@det.nsw.edu.au

<https://northkellyville-p.schools.nsw.gov.au>

8801 1911

### \* NUT MINIMISATION \*

Please support our young students who live with life-threatening allergies to nuts by refraining from sending your child to school with nut-based food products like Nutella or Peanut Butter.

# Order Form



abbeyvale.cookies    
0403 954 717 

## TEACHER SET DETAILS

Parent's name: \_\_\_\_\_

Child's name: \_\_\_\_\_

Child's class: \_\_\_\_\_

## ORDER DETAILS

Teacher Set	Name

### \* NUT MINIMISATION \*

Please support our young students who live with life-threatening allergies to nuts by refraining from sending your child to school with nut-based food products like Nutella or Peanut Butter.

# NKPS P&C CHRISTMAS RAFFLE BONANZA

NKPS P&C is hosting a Christmas Raffle Bonanza!  
Be in the running to win \$1,000!

Christmas is almost up on us and we are hosting our most ambitious event yet:  
our inaugural Christmas Raffle Bonanza!

*First Prize : Christmas Hamper + \$1,000 Cash Prize*  
*Second Prize : Christmas Hamper + \$200 Cash Prize*  
*Third Prize : Christmas Hamper + \$100 Cash Prize*

<https://www.raffletix.com.au/nkpsxmasraffle2020>

Limited tickets are available.  
Get in quick before the 300 tickets are all sold out!

Prizes will be drawn on Thursday 10 December at 10am by Mr Hogan.

1 tix = \$10 | 2 tix = \$20  
3 tix = \$25 | 6 tix = \$50



120-126 Hezlett Road, North Kellyville NSW 2155

northkellyville-p.school@det.nsw.edu.au

<https://northkellyville-p.schools.nsw.gov.au>

8801 1911

## \* NUT MINIMISATION \*

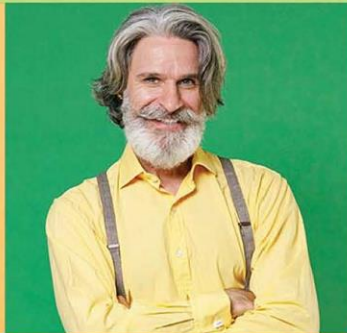
Please support our young students who live with life-threatening allergies to nuts by refraining from sending your child to school with nut-based food products like Nutella or Peanut Butter.



# A time for giving & getting together

Buy an Entertainment Membership to  
help us raise **MORE** this festive season.

FUNDRAISING WITH  
 *entertainment.*



Support us & buy today



Hezlett Road, North Kellyville NSW 2155  
Northkellyville-p.school@det.nsw.edu.au



<https://northkellyville-p.schools.nsw.gov.au>  
8801 1911



Wesley Out of School Hours Care North Kellyville

## Enrolments for 2021 are now open

Before school care | After school care

Wesley Out of School Hours Care runs all year round, offering a high-quality, reliable service for busy parents including vacation care and care on pupil free days.

We provide a safe and caring environment, where children get the chance to play, learn, and enjoy social interaction in a home away from home environment.

### Location:

North Kellyville Public School,  
Hezlett Road,  
North Kellyville NSW 2155.



For more information or to enrol, visit  
[wesleymission.org.au/enrolments-for-2021](https://wesleymission.org.au/enrolments-for-2021)

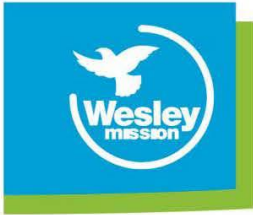
Do all the good you can  
because every life matters



Hezlett Road, North Kellyville NSW 2155  
[Northkellyville-p.school@det.nsw.edu.au](mailto:Northkellyville-p.school@det.nsw.edu.au)



<https://northkellyville-p.schools.nsw.gov.au>  
8801 1911








# Wesley Out of School Hours Care

North Kellyville vacation care

December 2020 - January 2021

## Pupil free days

Thursday 17 December 2020	Friday 18 December 2020	Monday 25 January 2021	Wednesday 27 January 2021	Thursday 28 January 2021
				
<b>White Christmas wonderland</b> Its Christmas Eve and we'll be landing in the UK where it's a snowy white winter Christmas.  <b>Electronics day</b>	<b>Christmas in Oz</b> Let's celebrate the Aussie way and enjoy a hot, wet and fun Christmas activities day, topped off with a BBQ.	<b>Teddy bear picnic</b> Cook from scratch, try different food and bring your favourite teddy and a lovely lunch to enjoy at our picnic.  <b>Electronics day</b>	<b>Summer camp</b> Make ice blocks, have fun with water play and dress up in your beach gear! Bring a towel, swimmers and sunscreen.	<b>School is back</b> We're preparing to go back to school and Wesley OOSH so we can help new students and make new friends.

For enquiries phone (02) 9626 6620  
or email [oosh@wesleymission.org.au](mailto:oosh@wesleymission.org.au)



Hezlett Road, North Kellyville NSW 2155  
[Northkellyville-p.school@det.nsw.edu.au](mailto:Northkellyville-p.school@det.nsw.edu.au)



<https://northkellyville-p.schools.nsw.gov.au>  
8801 1911



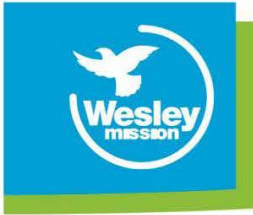
# Wesley Out of School Hours Care

## North Kellyville vacation care

### January 2021

Monday 04	Tuesday 05	Wednesday 06	Thursday 07	Friday 08
 <p><b>New Year, new you!</b></p> <p>It's 2021 and we're excited to explore our dreams and goals for the year together.</p> <p><b>Electronics day</b></p>	 <p><b>Aloha!</b></p> <p>Explore Hawaiian culture and traditions. It's Hawaiian-themed dress up day!</p>	 <p><b>Super soaker summer</b></p> <p>Come join in for a wet day with our circuit bouncy castle and water play.</p> <p><b>\$10 extra per child</b></p>	 <p><b>Space camp</b></p> <p>Enter the unknown and learn about space with fun-filled activities and sensory overload!</p>	 <p><b>Virtual reality science day</b></p> <p>We will step into a 9D cinema into another reality. Bring your bike or scooter for the best experience.</p> <p><b>\$15 extra per child</b></p>
Monday 11	Tuesday 12	Wednesday 13	Thursday 14	Friday 15
 <p><b>Circle of life</b></p> <p>Meet our baby chicks and participate in plaster painting.</p> <p><b>\$11 extra per child</b></p>	 <p><b>Spy kids</b></p> <p>Learn how to read Morse code, explore your imagination and solve the toughest mysteries.</p> <p><b>Electronics day</b></p>	 <p><b>Art attack</b></p> <p>A mobile art studio will be dropping by to run us through some awesome art-based activities.</p> <p><b>\$15 extra per child</b></p>	 <p><b>Trip around the world</b></p> <p>Travel all over the world! Let's learn about other cultures, languages and food. Lunch provided.</p> <p><b>\$5 extra per child</b></p>	 <p><b>Disney vs Marvel</b></p> <p>Back by demand, the children have voted to dress up as their favourite character. Bring a bike or scooter.</p>
Monday 18	Tuesday 19	Wednesday 20	Thursday 21	Friday 22
 <p><b>Fit N funky!</b></p> <p>Let go of your worries and have fun with music and fitness. Bring a bike or scooter.</p> <p><b>\$16 extra per child</b></p>	 <p><b>Game day</b></p> <p>It's time for minute-to-win-it challenges, board games and obstacles.</p> <p><b>Electronics day</b></p>	 <p><b>Scientist galore</b></p> <p>Dress as a scientist and step into the science lab, filled with experiments exploring all 5 senses.</p>	 <p><b>Chill and glam</b></p> <p>The outdoors are there to enjoy! Make natural face masks, cook campfire food and relax with yoga and meditation.</p>	 <p><b>Do it yourself (DIY) day</b></p> <p>We are going to make music using recycled goods with the amazing incursion 'JUNK BEATZ'.</p> <p><b>\$10 extra per child</b></p>





# Wesley Out of School Hours Care

North Kellyville vacation care

December 2020 - January 2021

## Important information for families

### What is Wesley Out of School Hours (Wesley OOSH) vacation care?

Wesley OOSH vacation care provides a fun, social and safe environment for primary school-aged child during the school holidays and pupil free day. We deliver a program that recognises the strengths, interests and uniqueness of every child and provides encouragement for continued growth.

### What are the hours of operation?

Vacation care: 7am – 6pm

### What are the costs and how do I book?

\$45 per day in 2020

\$47 per day in 2021

Plus any additional expenses for incursions and excursions. You may be eligible for the child care subsidy for vacation care.

Bookings open on Tuesday, 17 November 2020 at [wesleymission.org.au/ooshvac2020](http://wesleymission.org.au/ooshvac2020).

Please book no later than 72 hours in advance of the vacation care session. Payment must be received before start of care.

### What if I need to cancel?

Cancellations can be made up to 72 hours prior to care. Fees apply for cancellations after this time.

### What food do I need to send with my child?

Please ensure your child has had breakfast before vacation care.

Afternoon tea will be provided. However, please pack morning tea, lunch and water in a drink bottle. We are unable to reheat food brought from home. Please do not send food containing nuts.

### What does my child need to wear?

Please ensure your child is dressed appropriately for outdoor play activities. This includes a hat, a shirt that covers their shoulders and neck, socks and closed shoes.

### Will there be any excursions? What do I need to know about these?

Yes. Where possible we aim to provide fun excursions during vacation care for all children to enhance their learning.

An authorisation form will need to be completed for each excursion. Children need to be signed into the centre before 9am. Our charter bus will return to the centre no later than 4pm.

Please supply snacks, lunch and a drink in a backpack.

### What else should I be aware of?

Your child may bring electronic devices on the days indicated, but internet access is not allowed.

Please ensure that all your child's items are clearly labelled. Wesley OOSH does not take responsibility for any lost, damaged or stolen valuables.

For enquiries phone (02) 9626 6620  
or email [oosh@wesleymission.org.au](mailto:oosh@wesleymission.org.au)



Hezlett Road, North Kellyville NSW 2155

[Northkellyville-p.school@det.nsw.edu.au](mailto:Northkellyville-p.school@det.nsw.edu.au)



<https://northkellyville-p.schools.nsw.gov.au>

8801 1911

NKPS proudly supported by Brett Humby  
Guardian Realty

0413 491 111  
brett@guardianrealty.com.au



guardian  
realty



NKPS is proudly supported by  
**SAHARA TURKISH STREET FOOD.**  
Restaurants at North Village &  
The Ponds Shopping Centre.

**PAID ADVERTISEMENTS – NOT ENDORSEMENTS**

**O'GRADY  
DRAMA**

**“Act, Create, Communicate”**

The difference is dramatic....  
Boost your child's creativity, confidence,  
communication skills & self-development  
through drama

**Students 5 - 17  
Enrolling for 2021**

*We don't just  
teach drama,  
we teach life*

Classes held at Dural, Castle Hill, Quakers Hill,  
Bella Vista, Kellyville and Rouse Hill.

0438 788 080 | sydneywest@ogradydrama.com.au  
[www.ogradydrama.com.au](http://www.ogradydrama.com.au)

**JAZZ DANCE AT NKPS!**

WEDNESDAY AFTERNOONS (School Terms)  
SUPERVISION FROM 3PM;  
OOSH COLLECTION AND DROP OFF AVAILABLE  
CLASSES FROM 3.15PM TO 4PM

ENROL ONLINE AT  
[WWW.DANCINGWITHMAREE.COM.AU](http://WWW.DANCINGWITHMAREE.COM.AU)



Hezlett Road, North Kellyville NSW 2155  
Northkellyville-p.school@det.nsw.edu.au



<https://northkellyville-p.schools.nsw.gov.au>  
8801 1911

# You are invited for an Open Day.

Learn about our programs  
Public Speaking, Debating, Creative Writing,  
Drama. Also see our students attending the  
Australian Speech Communication Exam by  
ASCA

## Save the Date

Date- 5th December, 2020  
Time- 11:00 am - 12.30pm  
Location- Roselea Public School,  
Carlingford, NSW



Register on

[contactus@talentclubaus.com.au](mailto:contactus@talentclubaus.com.au)  
[www.talentclubaus.com.au/](http://www.talentclubaus.com.au/)



## North Kellyville Art Class

At NKPS

TUESDAYS  
13TH OCT- 1ST DEC  
3:00-4:30PM

Use your Creative Kids voucher  
and save \$100

Contact Paula 0430 295 022  
[thinkingartz@gmail.com](mailto:thinkingartz@gmail.com)



## NORTH KELLYVILLE BAND JOIN THE BAND!

Is your child interested in joining the school band?

The school band is now taking enrolments for 2021 and is open to all students currently in years 2-5.

No prior experience needed!

During Term 4 students will see a **band demonstration** at school that highlights the different instruments available for tuition. After this demonstration they will receive a green *Expression of Interest* note providing introductory information.

What do you need to do?

1. Carefully read the green *Expression of Interest* and then register your child's interest in joining the band online at <https://www.teachingservices.com.au/eoi>
2. Once you register online a TSA tutor will meet your child to help them assess which instrument they are most suited to\*\*
3. The results of this instrument trial will be sent home with enrolment information

Learning an instrument in an ensemble is a great way to experience the social, educational and personal benefits that music and the arts have to offer! TSA provides a variety of tuition options as well as instrument hire and sales to help parents give the gift of music to their children.

TSA is a registered COVID-safe provider and delivers instrumental programs with a focus on inclusion, student engagement and well-being.

**\*\*Instrument trials will take place within strict COVID-safe guidelines and will include a basic aural and rhythm assessment among several other activities which measure your child's suitability for each instrument.**



(02) 9651 7333  
[enrolments@teachingservices.com.au](mailto:enrolments@teachingservices.com.au)  
[www.teachingservices.com.au](http://www.teachingservices.com.au)



Hezlett Road, North Kellyville NSW 2155  
[Northkellyville-p.school@det.nsw.edu.au](mailto:Northkellyville-p.school@det.nsw.edu.au)



<https://northkellyville-p.schools.nsw.gov.au>  
8801 1911